



Brother MFC-J5720DW

22 PPM Black • 20 PPM Colour
Printer • Scanner • Copier • Fax



Reliability.....	Very Good
Multitasking.....	Not Rated
Administrative Utilities.....	Very Good
Feedback to Workstations.....	Very Good
Ease of Network Setup.....	Very Good
Print Drivers.....	Good
Scan Functions.....	Very Good
Colour/Black Print Quality.....	Good
Colour/Black Copy Quality.....	Fair
Colour/Black Print Productivity.....	Good
Colour/Black Copy Productivity.....	Good
Ease of Use.....	Very Good
Feature Set.....	Good
Security Features.....	Not Rated
Environmental Features.....	Not Rated
Ink Yield.....	Good
Supplies Cost per Page.....	0,0444 (Ger.), 4.46p (UK)

BLI RECOMMENDATION

Offering standard automatic duplexing and wireless printing, the Brother MFC-J5720DW gave a good overall performance in BLI's tests. This A3-capable colour inkjet all-in-one which outputs at 20 ppm in colour and 22 ppm in black in default mode performed flawlessly throughout its 15,000-impression durability test, with no mis-feeds, however, repeated cleaning cycles were required to maintain image quality over the course of the test. Suitable for small office and home office environments, the MFC-J5720DW is easy to set up and use. This Mopria-certified model offers mobile device printing from Apple iOS, Android, Kindle Fire and Windows Phone devices, and supports printing via AirPrint, Google Cloud Print, Brother's iPrint&Scan app, Wi-Fi Direct or Cortado Workplace. Users with wireless access points that support Wi-Fi Protected Setup (WPS) or AOSS can automatically configure wireless settings simply by pressing a button on their router. With Web Connect, end users can quickly scan paper documents at the MFP and deliver them to services including OneDrive, Box, Google Drive, Evernote, OneNote, Dropbox, Facebook, Picasa and Flickr; users can also access and print files from those services right at the control panel. Very good feedback is available via BRAdmin Professional and Brother's Status Monitor, which has an icon that changes colour to indicate warnings and errors. In addition to producing good overall output quality, the MFC-J5720DW is a productive unit, with class-leading job stream speeds in colour and black. This ENERGY-STAR-qualified device has an ink-save mode in the drivers which can help to extend the life of the cartridge. BLI recommends the Brother MFC-J5720DW for individual users or home office environments.

Test duration: Two months, including a 15,000-impression durability test.

Maximum monthly duty cycle: 30,000 impressions.

Manufacturer's recommended monthly volume: 250 to 1,500 impressions.

More information on the Brother MFC-J5720DW is available through bliQ (www.buyerslab.com/bliQ).

Strengths

- Highly reliable—flawless durability performance
- Fastest job stream speeds versus inkjet devices in colour and black with the host-based driver
- Faster than average first-copy times in colour from the document feeder and the platen
- Fast scan speeds in colour and black
- Robust feature set including colour touchscreen, BSI open architecture platform, standard wired and wireless interfaces, support for mobile printing (Brother iPrint&Scan app, Cortado Workplace, Wi-Fi Direct, AirPrint, Mopria and GCP), and scan to/print from USB
- Strong scan features include a range of scan-to-cloud options such as OneDrive, Google Drive and Facebook; users can scan to OCR and create editable text documents
- Standard duplex printing helps reduce paper usage and costs
- Above average standard and maximum paper capacities; above average standard memory capacity versus inkjet models
- Support for direct printing from USB with support for PDF, JPEG, PRN and TIFF files
- Simple driver installation routine
- Straightforward process for removing misfeeds; clean procedure for replacing all ink cartridges
- Lower than average scan file sizes

Weaknesses

- Printhead nozzles required cleaning more frequently than with rival devices
- Lower than average ink yields for all four colours compared to laser models
- Copied pages will be output in reverse order unless the user places them in the document feeder in reverse order first; Control Center 4 can be set up to reverse print but this an impractical multi-step process
- Slower than average first-page time from overnight sleep

TEST RESULTS AND OBSERVATIONS

+, – and ○ represent positive, negative and neutral attributes, respectively.



RELIABILITY

VERY GOOD

- The Brother MFC-J5720DW is certified highly reliable by BLI, completing a 15,000-impression durability test without experiencing any misfeed. In addition, the unit completed a 1,500-scan ADF durability test with no misfeeds.
- However, on 11 occasions during BLI's testing technicians were alerted to the need for a head cleaning routine when streaks appeared in various colours on all output. On most occasions a head cleaning routine managed to unblock the nozzles but on one occasion streaks remained on the internal print quality page and a second cleaning cycle was needed. Based on Brother's recommended volume of up to 1,500 pages per month, users can expect to perform a cleaning cycle every one or two months, which is more frequent intervention than is required on competitive units tested.

PMs/Malfunctions	Service Required	Meter Count (Impressions)	ADF Count (Scans)
Meter Count (Beginning of Test)		0	0
User Maintenance/Interventions	Poor image quality due to clogged nozzles; BLI technicians performed printhead cleaning procedures	3,166, 4,055, 4,766, 6,528, 7,456, 8,600, 9,697, 10,902, 12,208, 13,037, 14,132	
End of Test Period		15,000	1,500
Total Misfeeds/Misfeed Rate		0/Not applicable	0/Not applicable
Total Service Calls	0		



MULTITASKING

NOT RATED

- The unit downloads one print job at a time from the network queue, which is common among competitive devices.
- The unit doesn't allow users to perform multiple functions concurrently, as is typical of devices in this class.
- Jobs are processed on a first-in, first-out basis. Administrators cannot alter priority settings and users cannot interrupt jobs, which is the norm for inkjet all-in-one devices.



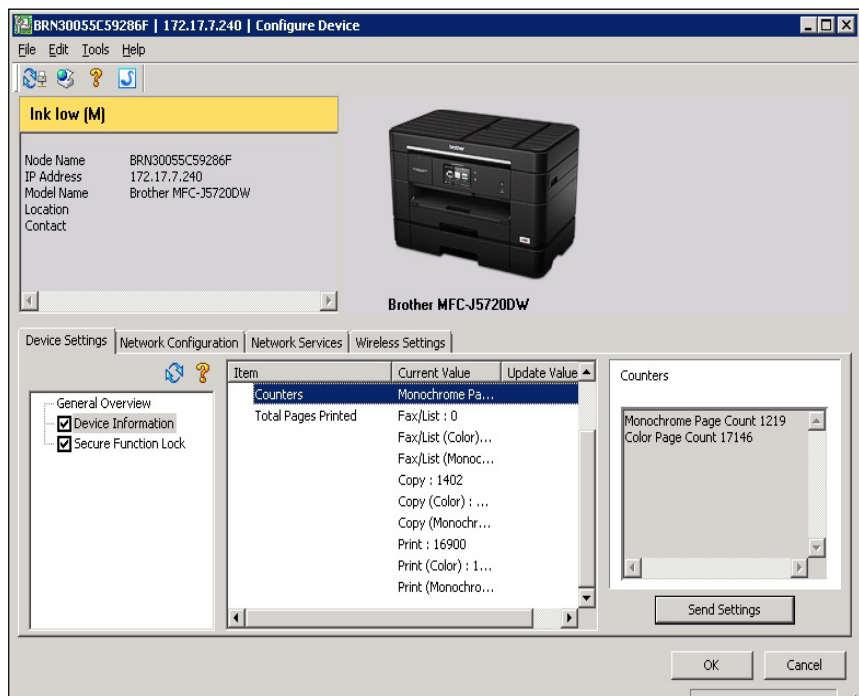
ADMINISTRATIVE UTILITIES

VERY GOOD

- BRAdmin Professional, which is available for free download from Brother's website, locates all Brother and compatible devices on the network, and enables administrators to control the network settings of connected devices and access the embedded web page of monitored devices on the network to check status. The utility automatically refreshes the device's status every 60 seconds by default; administrators can adjust the time from anywhere between one minute to one hour, in one-second increments. BRAdmin Professional also allows administrators to create printer logs that capture page counts and consumables information from all devices. The utility offers users extensive device and/or print job status information and lets the administrator change any of the unit's configuration settings; configuration settings of other devices on the network may be changed too.

Node Name	Model Name	Device Status	IP Address	Log	Location	Contact	Serial No.	Page Count	MAC Address	Firmware Ver.	Update Date
TASKaFa 3051c		Sleeping...	172.17.7.188					5414	00:c0ee:3d:7a:44		12:04 Feb. 06, 2015
Canon FF670 1.00		Connection Error	172.17.7.78				771	F4:81:39:aa:97:29			12:04 Feb. 06, 2015
TASKaFa 2201		Connection Error	172.17.6.162				53668	00:c0ee:9b:97:b1			12:04 Feb. 06, 2015
Canon FF770 1.00		Sleeping...	172.17.7.79				778	F4:81:39:aa:97:1f			12:04 Feb. 06, 2015
TASKaFa 2550i		Connection Error	172.17.7.184				2182	00:c0ee:a6:00:e1			12:04 Feb. 06, 2015
BRN0018A9A2314A	Brother DCP-8250DN	Connection Error	172.17.7.197				000201234567...	2316	00:1b:a9:82:31:4a	1.11	12:04 Feb. 06, 2015
BRN3005C3A4F52	Brother MFC-4850CDW	Connection Error	172.17.7.170				E73482E43129...	32420	30:05:5c:3a:4f:52	F	12:04 Feb. 06, 2015
BRN3005C45AF5C	Brother HL-48350CDW series	Connection Error	172.17.7.168				E73444E43137...	30587	30:05:5c:45:4f:5c	E	12:04 Feb. 06, 2015
BRN3005C46FECS	Brother MFC-4950CDW	Connection Error	172.17.7.172				E73489F43139...	39598	30:05:5c:46:fe:c5	C	12:04 Feb. 06, 2015
BRN3005C59286F	Brother MFC-J5720DW	Ink low (M)	172.17.7.240				E73183HF440...	18365	30:05:5c:59:28:6f	G	12:04 Feb. 06, 2015
IPF 525	Canon IPF65 1.22	Connection Error	172.17.7.73		CEIC Test Network	Administrator		840	00:00:85:a0:71:51		12:04 Feb. 06, 2015
MP6100 Series	Canon MP6100 Series	Connection Error	172.17.7.174					30958	18:0c:ac:89:14:c1		12:04 Feb. 06, 2015
MP 3554	RICOH MP 3554	Connection Error	172.17.7.176					102273	00:26:73:8d:12:08		12:04 Feb. 06, 2015
MP 5054	RICOH MP 5054	Connection Error	172.17.7.77					203331	00:26:73:8c:ee:b9		12:04 Feb. 06, 2015
MP C3003	RICOH MP C3003	Low: Cyan Toner	172.17.7.189		Solutions			179540	00:26:73:63:e9:3f		12:04 Feb. 06, 2015
NP1730PCE	HP Color LaserJet CP2025dn	PowerSave on 172.17.7.186	172.17.7.186		Solutions	HP Color LaserJet C...		2856	00:23:7d:73:df:ce		14:56 Nov. 19, 2014
R C230	Canon R C230 91.02	Connection Error	172.17.7.175					238812	00:00:85:87:46:98		12:04 Feb. 06, 2015
R-ADV C2020	Canon R-ADV C2020-42.01	Connection Error	172.17.7.171					46293	00:1e:0f:4a:5a:98		12:04 Feb. 06, 2015

BRAdmin Professional discovers Brother and compatible devices on the network, providing current status information on each on the main screen.



BRAdmin Professional keeps an accurate log (at the bottom right) of colour and monochrome page counts.

- BRAdmin Light is a utility for initial setup of Brother network-connected devices. With this utility users can search for Brother devices on the network, view status and configure basic network settings such as IP addresses.



FEEDBACK TO WORKSTATIONS

VERY GOOD

- Users can receive pop-up messages for error conditions, such as wrong paper size, cover is open, ink low or paper empty.
- The Status Monitor's icon changes colour on the taskbar when a user moves the cursor over the icon, whereupon a context-sensitive message appears and provides details of the error. Users can also click on the icon and open the window to receive a more detailed explanation of the problem.
- Email alerts can be sent to the administrator when an error occurs (e.g., cover open, paper jams) or consumables are depleted (e.g., replace ink).
- Consumables status, such as remaining ink, is available from the Solutions Center 4 utility.



EASE OF NETWORK SETUP

VERY GOOD

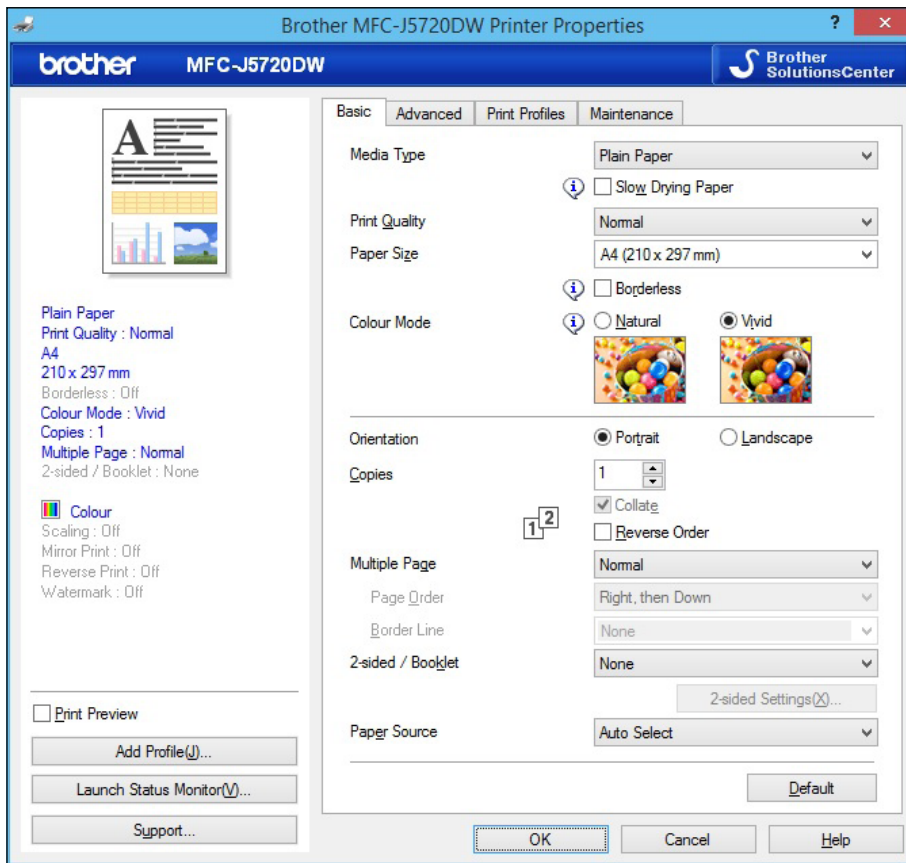
- The unit ships with starter cartridges rated at 550 impressions for black, cyan, magenta and yellow. The ink cartridges are supplied separately in shrink-wrapped packaging; printheads are preinstalled. Brother recommends that two people lift the device out of the box and place it in the desired location. Users can be up and running in minutes.
- The device comes with a DVD that contains the host-based driver, BRAdmin Light, Status Monitor, Brother Creative Centre, Wireless LAN setup wizard and software repair utilities plus Nuance PaperPort SE scan software. Users can choose whether to install the full 'MFL-Pro' (Multi Function Link Pro, Brother's proprietary software) suite with Nuance PaperPort SE and the driver (which takes 18 mouse clicks), MFL-Pro with the driver or the driver on its own. The disc auto-launches upon insertion in the drive. Installation on the network is very easy and the port is automatically created.
- The driver deployment utility allows for downloading of the drivers to multiple workstations rather than installing them on to each workstation separately.
- Users with wireless access points that support Wi-Fi Protected Setup (WPS) or AOSS can automatically configure wireless settings simply by pressing a button on their router.



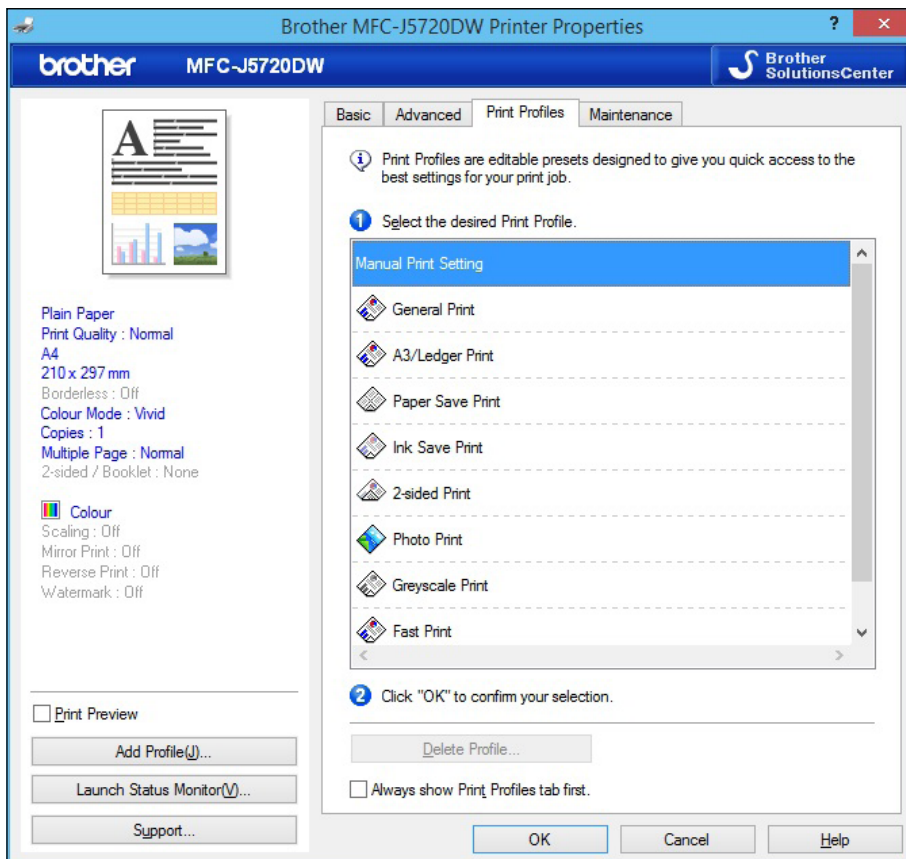
PRINT DRIVER

GOOD

- The device was tested with the host-based driver, which supports multiple Windows, Linux and Mac operating systems. A PostScript driver emulation is available, but was not tested with this model.



Most of the features required for a typical print job are found on the Basic tab of the host-based driver, including the choice of colour mode ('natural' or 'vivid'). All settings are summarized on the left, but the thumbnail preview graphic only displays a limited number of changes such as colour or greyscale.



The Print Profiles tab in the host-based driver provides users with editable presets for quick access to frequently used job settings.

- The driver also includes an Ink Save mode, which helps to extend the life of the cartridges.
- From the host-based driver users can link to Brother's Solutions Center, a website that provides information about the device, including FAQs, user guides, driver updates and tips for using the machine.
- File size does not increase when printing multiple collated sets.

Brother MFC-J5720DW Print Driver Features

	Host-based (GDI)
Auto Feature/Device Detection	No
Booklet Printing	Yes
Collate	Yes
Max Paper Sources per Job	4
Mirror Image	Yes
Negative Image	No
N-up Printing	1 to 16
Overlay	No
Paper Gauge	No
Print and Hold	No
Proof Print	No
Quantity Selection	999
Reduction/Enlargement	Auto; 25 to 400%
Resolution Modes	Up to 600 x 1200 dpi
Save Settings	Yes
Secure Print	No
Watermarks/Custom Watermarks	Yes/Yes
Cover Mode	No
Poster Mode	Yes (2 x 2, 3 x 3)
Transparency Separators	No
Ink Gauge	No
Ink Save	Yes
Print All Text as Black	No



SCAN FUNCTIONS

VERY GOOD

- The Brother MFC-J5720DW features colour and black scanning to email (via Control Center 4, which automatically opens the resident email program) and to network folders via FTP. Users can scan at up to 2400 x 2400 from the platen and 2400 x 1200 from the document feeder, with a maximum interpolated resolution of 19200 x 19200. A wide variety of file formats are supported including TIFF, JPEG, PDF, BMP and PNG.

- Users can also scan to OCR using the bundled Presto! PageManager software, which allows users to scan documents and convert them to text documents that can be edited using word-processing software.
- The Control Center 4 software allows users to program an unlimited number of custom scan profiles using the Custom Scan option to save their scan settings for one-touch scanning.
- Users can scan to and print from a USB flash memory drive. Users can change the quality (Photo or Normal), paper type (Brother or other), and paper size, and can browse into subfolders, but they cannot rename files or change any other settings.
- Brother Web Connect lets a user scan documents to, and print documents from, popular online services directly from the control panel of the MFP. What sets the solution apart from others, however, is the range of destinations supported by Web Connect. Users can quickly scan paper documents at the MFP and deliver them to services including OneDrive, Box, Google Drive, Evernote, OneNote, Dropbox, Facebook, Picasa and Flickr. Users can also print files from these services.
- Using BRAdmin Professional, administrators can set up LDAP directories and network user authentication. Only administrators can make changes and add addresses.
- Scan speeds are faster than average in black and colour compared to both inkjet and laser groups.

Scan Speed in IPM

	Brother MFC-J5720	COMPETITIVE AVERAGE (INKJET)	COMPETITIVE AVERAGE (LASER)
FULL COLOUR			
1:1	11.6	5.6	9.6
2:2	24.4	6.6	6.5
BLACK			
1:1	12.1	8.6	14.0
2:2	25.3	8.1	10.8

Files are scanned at 300 dpi in PDF format.

Scan File Size in KB

	BROTHER MFC-5720DW	COMPETITIVE AVERAGE (INKJET)	COMPETITIVE AVERAGE (LASER)
FULL COLOUR	452	927.6	1141
BLACK	104	289.4	320.3

Testing is conducted with single-page files scanned at 300 dpi in PDF format.

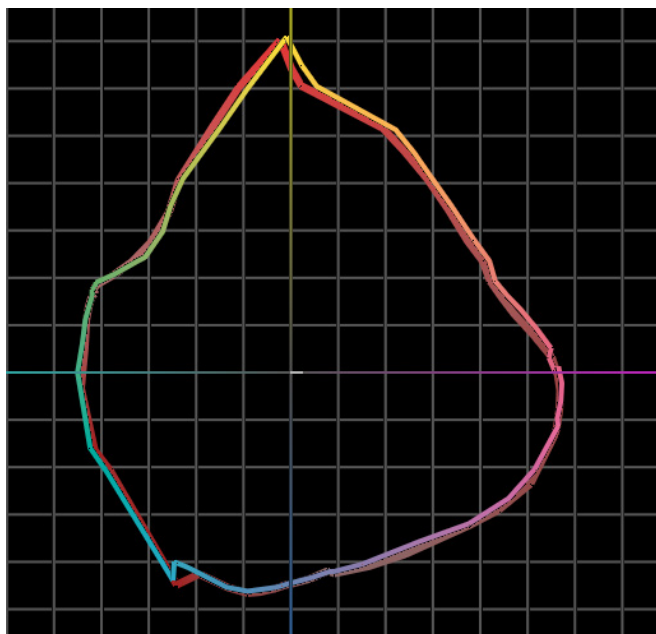


COLOUR/BLACK PRINT QUALITY

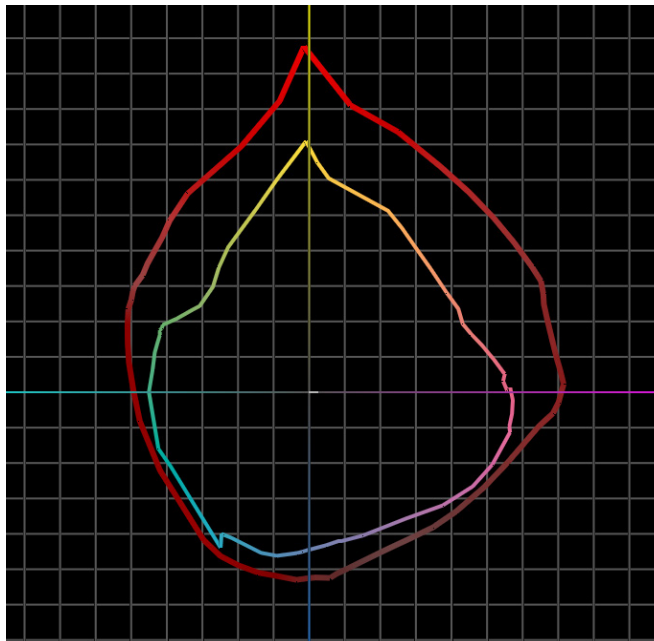
GOOD

- Text was fully formed and exhibited above average darkness, but sharpness of characters and smoothness of curves and serifs were below average; an average amount of ink overspray in text and fine lines was visible under magnification, giving text a fuzzy appearance and causing fine lines to blur into each other. Production of closely spaced fine lines was below average, as was the consistency of line thickness; however, circles were fully formed and diagonal lines showed no evidence of stair-stepping.
- There was distinct separation between all levels of the halftone range; halftone coverage was marked by competitive smoothness and no evidence of banding. Solids showed competitive boldness and average consistency of coverage.
- Colour business graphics showed average consistency of solid colours, below average sharpness of fine detail and competitive pastel shades, but saturation was not bright enough and background reproduction was below average.
- Colour photographic images exhibited a wide range of shades but below average sharpness of detail, with average halftone range and clear separation between levels. Images showed some graininess but skin tones looked natural.

Text	Good
Line Art	Fair
Halftone Pattern	Good
Halftone Range	Excellent
Solids	Good
Colour Business Graphics	Good
Colour Photographic Images	Good



Brother MFC-J5720DW colour gamut at the beginning (in full colour) and end of testing (in red). Colour gamut CIE volume at 159,412 remained very consistent up to 15,000 impressions, with a volume of 148,097 at the end.



Colour gamut comparison between printing on 100 gsm plain paper at the start of testing (shown colorimetrically), with a CIE volume of 159,412, and on 180 gsm photo quality paper with a CIE volume of 325,629 (shown in red).

Print Density

Colour Density Readings

Cyan	0.86
Magenta	0.77
Yellow	0.77

Density of a printed image with blocks of all solid colours (based on the average of two readings for each colour).

Print Density

Brother MFC-J5720DW	1.14 to 1.17
Density for devices in this class tested to date	1.06 to 1.57

Measurements are based on four readings corresponding to four different solid black locations on output. The higher the density reading, the darker the image.

Halftone Range

Brother MFC-J5720DW	10 to 100%
Typical range for competitive units	4 to 96%



COLOUR/BLACK COPY QUALITY

FAIR

- In default copy mode text was rated fair overall, as it displayed below average darkness and sharpness. Smoothness of curves, serifs and lines was also below par, and an above average amount of ink overspray was visible under magnification, giving poor solid fills in characters.
- Line art was also fair overall, although no stair-stepping was evident in diagonal lines. Circles were fully formed but fine lines showed below average distinctness and consistency. An above average amount of ink overspray was visible, causing fine lines to look blurred and inconsistent.
- Halftone pattern was rated good overall, with some graininess but no banding. Halftones were visible over an excellent range with distinct separation between all levels.
- Solids were rated good, as boldness was competitive and coverage was consistent.
- Colour business graphics in default copy mode were rated fair overall, with below average consistency of solid colours and average pastel shades, but saturation wasn't bright enough, and fine detail and background reproduction were both below average.
- Colour photographic images in copy mode showed an average range of shades and competitive halftone range. Skin tones were natural looking but there was some evidence of graininess.

Copy Quality

Text	Fair
Line Art	Fair
Halftone Pattern	Good
Halftone Range	Excellent
Solids	Good
Colour Business Graphics	Fair
Colour Photographic Images	Good

Colour Copy Density Readings

	Original Density	Copy Density
Cyan	1.58	0.63
Magenta	1.53	0.75
Yellow	1.11	0.64

Density of copied image when tested in the default mode using a KATUN test original containing blocks of all solid colours (based on the average of two readings for each colour).

Copy Density

Original	1.68 to 1.78
Brother MFC-J5720DW	1.13 to 1.16
Density for devices in this class tested to date	0.90 to 1.89

Measurements are based on two readings corresponding to two different solid black locations on the output. The higher the density, the darker the image.

Visible Halftone Range

Brother MFC-J5720DW	15 to 100%
---------------------	------------

The halftone range test original consists of eight blocks of increasing dot-fill levels (15, 29, 53, 77, 83, 91, 95, 100%).



COLOUR/BLACK PRINT PRODUCTIVITY

GOOD

- When using the host-based GDI driver to print BLI's job stream, which simulates typical traffic in a multi-user environment, the MFC-J5720DW's running speed is at the top of the competitive range for inkjets tested.
- Compared to inkjet models, running speeds when printing multiple sets are competitive in both simplex and duplex modes in both colour and black. Compared to laser models, colour duplex speeds are on the low side of competitive, but performance in all other modes is competitive.
- Compared to inkjets tested, first-print times are slower than average for the Word document used in testing, faster than average for the PowerPoint file and competitive for the PDF and Excel files. Compared to laser models, first-print time for the Word and XLS files are competitive, while those for the PPT and PDF are faster than average.
- First-print time from overnight sleep mode is slower than average for the group.

First-Print Time from Overnight Sleep Mode in Seconds

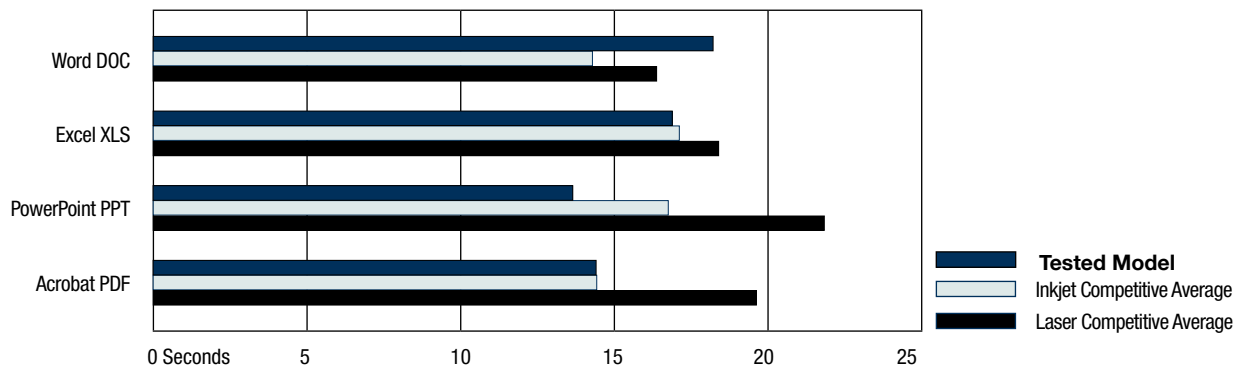
Brother MFC-J5720DW	33.37
Average for devices in this class tested to date (inkjet)	25.71
Average for devices in this class tested to date (laser)	25.36

Device sits idle overnight; a single-page black Word document is sent to the device. First-print time indicates the time it took to RIP, image and deliver the first page of the test document to the output tray.

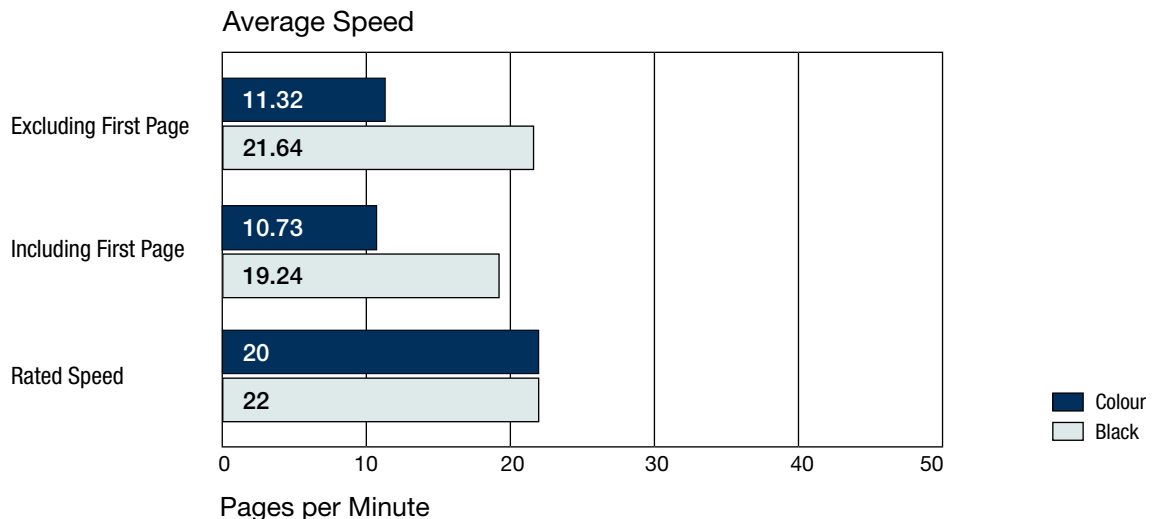
First-Print Times by File Types | Competitive Average

Windows 7		Brother MFC-J5720DW	Competitive Models Tested (inkjet)	Competitive Models Tested (laser)
Word DOC	Black Text	18.26	14.32	16.41
Excel XLS (full colour)	Colour Text	16.92	17.15	18.43
PowerPoint PPT (full colour)	Colour Graphic/Text	13.68	16.79	21.87
Acrobat PDF	Black Graphic/Text	14.44	14.46	19.66

First-print time in seconds indicates the time it took to process, image and deliver a single-page test document set to the output tray. The unit was tested using the host-based driver. Competitive models were tested with their PCL drivers.



BLI's Tested Print Speeds



Print speed is tested using BLI's Monochrome Test Original with 6% page coverage and BLI's XLS test document, which consists of colour text and graphics. The test page is printed in a quantity equal to double the vendor's rated print speed for the device in each mode tested (e.g., if the vendor's rated print speed is 20 ppm, 40 pages are printed). Speeds were tested using the host-based driver.

Average Print Productivity | Competitive Average

SPEED IN PPM	Brother MFC-J5720DW	COMPETITIVE AVERAGE (INKJET)	COMPETITIVE AVERAGE (LASER)
FULL COLOUR			
1:1	12.1	10.6	13.5
1:2	5.6	6.1	9.1
BLACK			
1:1	15.8	14.1	15.3
1:2	5.6	7.1	9.1

Productivity is tested using a 10-page mixed-color-and-black document and a 10-page black document. The unit was tested using the host based driver.

Job Stream | Competitive Average

SPEED IN PPM	Brother MFC-J5720DW	COMPETITIVE AVERAGE (INKJET)	COMPETITIVE AVERAGE (LASER)
FULL COLOUR	9.1	6.6	8.8
BLACK	9.9	8.4	9.9

BLI's job stream includes Word documents, Outlook email messages, Excel spreadsheets, PowerPoint, HTML and Acrobat PDF files, totalling 19 pages. This test simulates the type of traffic a typical device might experience in a real-world, multi-user environment. All of the files are sent to the device as a group, at which time the stopwatch begins; timing ends when the last page of the last file exits the device. Job stream efficiency is determined by the percentage of the rated speed at which the device operates when producing real-world jobs. The closer the rate is to 100%, or if it exceeds 100%, the more efficient the device.



COLOUR/BLACK COPY PRODUCTIVITY

GOOD

- Compared to inkjets tested, first-copy times from the platen and document feeder are competitive in black mode and are faster than average in colour. Compared to entry-level A4 laser models tested, first-copy times are faster than average in all tests.
- When copying multiple sets in both colour and black, the unit's tested speeds are competitive with inkjet models tested in simplex and duplex modes. Copy speeds are slower than competitive laser models tested in all modes.

First-Copy Time in Seconds | Competitive Average

	Brother MFC-J5720DW	COMPETITIVE AVERAGE (INKJET)	COMPETITIVE AVERAGE (LASER)
FULL COLOUR			
Platen	15.39	20.70	22.04
Document Feeder	17.26	22.54	25.17
BLACK			
Platen	14.19	12.21	17.72
Document Feeder	15.78	17.11	18.46

Average Copy Productivity | Competitive Average

SPEED IN PPM	Brother MFC-J5720DW	COMPETITIVE AVERAGE (INKJET)	COMPETITIVE AVERAGE (LASER)
FULL COLOUR			
1:1	7.3	5.8	10.4
1:2	4.2	4.2	7.1
2:2	4.6	3.9	5.8
BLACK			
1:1	8.4	8.4	13.0
1:2	4.1	5.6	8.0
2:2	4.6	5.2	6.4

Efficiency is tested using a 10-page full-colour document and a 10-page black document. BLI obtains the overall efficiency for each mode by averaging the efficiency ratings (derived by dividing the tested speed of the device by the rated speed and then multiplying by 100) for each run length (1, 5 and 10 sets). The unit's efficiency was tested using the PCL driver.



EASE OF USE

VERY GOOD

- The MFC-J5720DW's control panel features a small but clear touchscreen display which can be scrolled left and right depending on the function in use. The menu system is logically organized and easy to navigate.



Brother MFC-J5720DW's control panel is easy to use.

- Brother's Control Center 4 utility brings to the desktop all the functionality available at the control panel, and more. It can control multiple Brother devices and enables users to set up Custom buttons for various scan, copy and print functions. Highly intuitive to navigate, Control Center 4 offers a wide variety of options for photo editing and enhancement including trimming, orientation and red eye removal. Users can preview the image before it's printed, saving wasted paper.
- Removing misfeeds from all access areas is extremely easy, although the cover needs to be open.



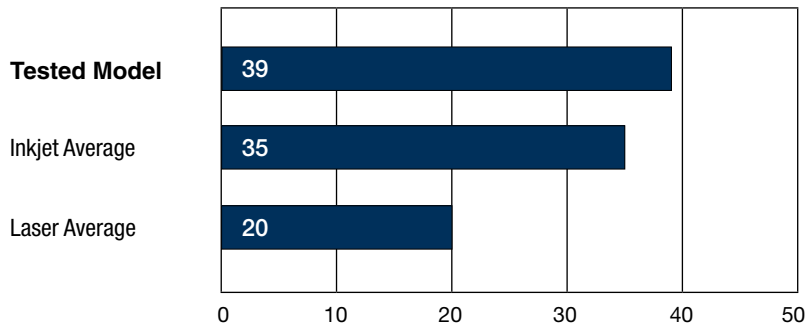
Adjusting the tray for different size media is straightforward in both trays, with length and width guides that move in sync.



Replacing ink cartridges is a simple and clean process.

- To replace ink, users simply open the access door, press the button on the ink cartridge to eject it, then slide the new one into place. The procedure is simple and clean.
- Users should be aware that copied pages will be output in reverse order unless the user places them in the document feeder in reverse order first. Control Center 4 can be set up to reverse print but this an impractical multi-step process which involves many mouse clicks.
- Compared with inkjet models, BLI estimates users will have to replace supplies about as often as other models in this class; compared to laser models, however, users will have to replace supplies more frequently.

Projected 36-Month User Interventions (Over 18,000 impressions)



User interventions are calculated based on BLI's average tested toner yields (using the ISO 24712 test target, printed in a semi-continuous mode), as well as the manufacturer's rated yields for other consumables (drums, developer units, waste containers, etc.). BLI calculates the total number of supplies and maintenance parts that would be required to output 18,000 pages (assumes 500 pages per month, which is an average volume for this class of device, over three years). Each individual cartridge or other consumable is counted as one intervention, so the black, cyan, magenta and yellow cartridges being replaced once count as four interventions. Long-life maintenance parts, such as fuser kits and rollers, and paper supply replenishments, aren't included in BLI's calculations. Depicted scenario is for illustrative purposes only. The actual number of interventions over three years will vary based on a number of factors, including (but not limited to) page coverage, run lengths, usage patterns, periods of inactivity and calibrations performed.


FEATURE SET

GOOD

- Automatic duplex printing is standard, as with the great majority of models in this group.
- In addition to standard high-speed USB 2.0 and Ethernet interfaces, the device provides a standard wireless interface, which is only available as standard or as an option on a few other models in the competitive group.
- The standard, non-upgradeable 256-MB memory is above the average standard and maximum memory capacities compared with other inkjet devices in this speed range and class. However, many competitive laser models offer a higher maximum memory capacity.
- Compared to inkjets, standard paper capacity of 250 sheets is competitive for the group, while the maximum capacity of 580 sheets is among the highest. Many competitive laser models offer higher maximum paper capacities. Both trays can handle A3 size paper, unlike the majority of its competitors.
- The device features a twin bypass unit, unlike competitive devices, one slot accommodating five A3 sheets, and the other up to 80 A4 sheets. As it is located at the rear, it offers a straight paper path to accommodate heavier grade media.
- The unit accommodates up to 220 gsm from the bypass and from the tray, which is competitive paper-handling ability for models in this group.
- The device supports direct printing from USB in a variety of file formats including PDF, JPEG, PRN and TIFF. It also supports GDI printing and direct photo printing from media cards, PictBridge-enabled cameras, or USB flash memory drives.



SECURITY FEATURES

NOT RATED

- While a device like this isn't expected to have many security features, it does offer SSL/TLS, IPv6 support, wireless network security and secure function lock.
- Brother's optional PrintSmart Secure Pro is a server-based secure print, accounting and output management solution that enables organizations to track and control print, copy and scan usage by users or groups. It also provides secure pull printing, support for mobile printing and scan routing capabilities on supported devices. Further details of PrintSmart Secure Pro may be found on BLI's Solution Center.



ENVIRONMENTAL FEATURES

NOT RATED

Specified capable of running 30% post-consumer recycled paper	Yes
Specified capable of running 50% post-consumer recycled paper	Yes
Specified capable of running 100% post-consumer recycled paper	Yes
Instant/Quick Fusing	No
Duplexing	Yes
Ink-save mode	Yes
RoHS-compliant	Yes
Percent of product made from recycled materials (%)	INA
Percent of product made from post-consumer materials (%)	0
Percent of product made from pre-consumer materials (%)	0
Percent of product made from bio-based materials (%)	Plastics, % unknown
Product designed for recycling (easily disassembled, no binding agents)	Yes
Please list types of items that can be recycled.	All plastic parts over 25g are marked with their material
Hardware remanufacturing program for this product	No
Toner cartridge recycling program for this product	Yes
Pre-paid label for return of toner cartridges/bottles for this unit	Yes
Toner recycling system	No
Ability to program features such as duplexing and auto shut-off, over entire fleet	Yes
What tool can be used to do this?	BRAdmin
Green packaging materials for the product	Yes
Green packaging materials for its consumables	Yes
Packaging materials used:	Cardboard carton, polystyrene pad, polyethylene bag
Typically, who is responsible for getting rid of packaging materials after products are shipped to the customer location (e.g., customers, dealers, shippers)?	Customer or dealer
Eco-Label Certifications	
ENERGY STAR	Yes
Other	Montreal Protocol, Germany Blue Angel, Japan Eco Mark, Nordic Swan Label

Tested energy consumption levels of the device (in watts):	
Ready/Idle	5.5
Energy-save	NA
Sleep mode	1.8
During Printing	32
How fast can this product be programmed to go into the following modes	
Ready/Idle	1 minute (default)
Energy-Save	NA
Sleep mode	0
Can the above settings be programmed by a walk-up user	Yes
How long does it take for this product to print one page after being in sleep mode	33.37 seconds
Emissions output from this device for the following substances (in mg/h):	
Ozone	INA
Styrene	INA
Benzene	INA
TVOC	INA
Dust	INA

INA: Information not available

NA: Not applicable



INK YIELD

GOOD

- Based on an average of two high yield print cartridges per colour, tested ink yield is competitive compared with inkjet devices but slightly below average for laser models tested..
- All four colours comfortably exceeded the manufacturer's rated yield.

Tested Ink Yield

	Black	Cyan	Magenta	Yellow
Brother MFC-J5720 Tested Impressions	2,920	1,623	1,356	1,412
Competitive Average (Inkjet)	2,808	2,325	1,825	2,612
Competitive Average (Laser)	3,852	3,279	3,113	3,370
Brother MFC-5720DW Rated Yield	2,300	1,500	1,500	1,500
Competitive Average (Inkjet)	2,456	1,894	1,894	1,894
Competitive Average (Laser)	3,320	2,800	2,800	2,800

¹ Based on BLI's testing of two print cartridges using the ISO 24712 toner yield test original.

Supplies Cost per Page

	France	Germany	Italy	UK
Ink Cost per Page ¹	0,0444€	0,0444€	0,0468€	4.46p

¹ Based on Brother's suggested retail pricing for the print cartridges and BLI's tested yields using the ISO 24712 toner yield test original.

SUPPORTING TEST DATA

Test Environment: Testing was conducted under ambient conditions of 22°C (+/-2.7°C) and 45% RH (+/-10%); monitored daily by a Dickson Seven-Day Temperature/Humidity Chart Recorder, in Buyers Lab's test facility at Unit 1 Station Industrial Estate, Wokingham, Berkshire RG41 2YQ. All products lab tested by BLI are powered by dedicated circuits that are protected by ESP (Electronic Systems Protection, Inc.) surge protectors to prevent transient power and communication disturbances from affecting equipment under test.

Test Equipment: BLI's dedicated test network in Europe, consisting of Windows 2008 servers, Windows 7 workstations, 10/100/1000BaseTX network switches and CAT5e/6 cabling. BLI's daily test usage is designed to replicate real-world use over an eight-hour workday, and as such includes a mix of various-size documents, simplex and duplex modes, and a mix of short, moderate and long run lengths, and on/off cycles, throughout the day.

Test Equipment: BLI's dedicated test network, consisting of Windows NT 4.0, 2000 and Microsoft Exchange servers, Windows XP workstations, 10BaseT/100/1000BaseTX network switches and CAT5e 16 cabling. BLI's daily test usage is designed to replicate real-world use over an eight-hour workday, and as such includes a mix of various-size documents, simplex and duplex modes, and a mix of short, moderate and long run lengths, and on/off cycles, throughout the day.

Test Duration: Products are tested for two months, three weeks of which consists of a durability test during which the product is run at half of its manufacturer-rated maximum monthly volume. BLI's daily test usage is designed to replicate real-world use over an eight-hour workday, and as such includes a mix of various-size documents, simplex and duplex modes, and a mix of short, moderate and long run lengths, and on/off cycles, throughout the day.

Tested Configuration: Brother MFC-J5720DW base unit (UK).

Test Procedures: Test Procedures: The test methods and procedures employed by BLI in its lab testing include BLI's proprietary procedures and industry-standard test procedures, including a BLI-developed variation of ASTM's 1318-90 Test Method for Determination of Productivity using Electrostatic Copy Machines. In addition to a number of proprietary test documents, BLI uses an industry-standard KATUN test original for evaluating black image quality and test suites from Quality Logic to evaluate applications compatibility. In addition, density of output is measured using an X-Rite 508 Densitometer. Units are tested for compatibility on Windows 7 with Microsoft Office Suite 2010, as well as Adobe Acrobat Reader 10.0.

BUYERS LABORATORY LLC • North America • Europe • Asia

Gerry Stoia, CEO

Anthony F. Polifrone,
Managing Director

Gerry O'Rourke, Managing
Director, BLI International

Patti Clyne,
Senior VP of Sales

Daria Hoffman,
Managing Editor

Dr. Simon Plumtree,
European Managing Editor

Tracie Hines, Senior Editor,
Competitive Analysis Reports

Jamie Bsales,
Senior Product Editor, Solutions

George Mikolay,
Senior Product Editor, A3 MFPs

Marlene Orr, Senior Analyst,
Printers and A4 MFPs

Lisa Reider, Senior
Product Editor, Scanners
and Environmental

Carl Schell, Senior Writer

Priya Gohil, Senior Editor

Kaitlin Pendagast,
Research Editor

David Sweetnam,
Head of European Research
and Lab Services

Pete Emory, Director of
Laboratory Operations

Martin Soane,
European Lab Manager

Pia Beddiges, Manager
of Competitive Services

Anthony Marchesini,
IT Director

T.R. Patrick, Art Director

CERTIFICATE OF RELIABILITY

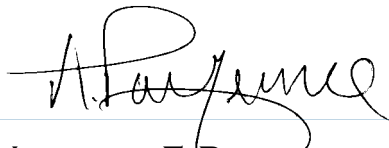
Awarded to

Brother International Corporation

for the performance of the

Brother MFC-J5720DW

in BLI's in-house durability test.



ANTHONY F. POLIFRONE
MANAGING DIRECTOR



MAY 2015

DATE

This is to certify that when subjected to a 15,000-impression Buyers Lab durability test, the Brother MFC-J5720DW proved to be a highly reliable product.

BUYERS LABORATORY LLC

THE LEADING INDEPENDENT OFFICE PRODUCTS TEST LAB AND BUSINESS CONSUMER ADVOCATE

NORTH AMERICA ■ EUROPE ■ ASIA ■ www.BuyersLab.com

COPYRIGHT ©2015 BUYERS LABORATORY LLC. REPRODUCTION WITHOUT THE WRITTEN PERMISSION OF BLI IS STRICTLY FORBIDDEN.